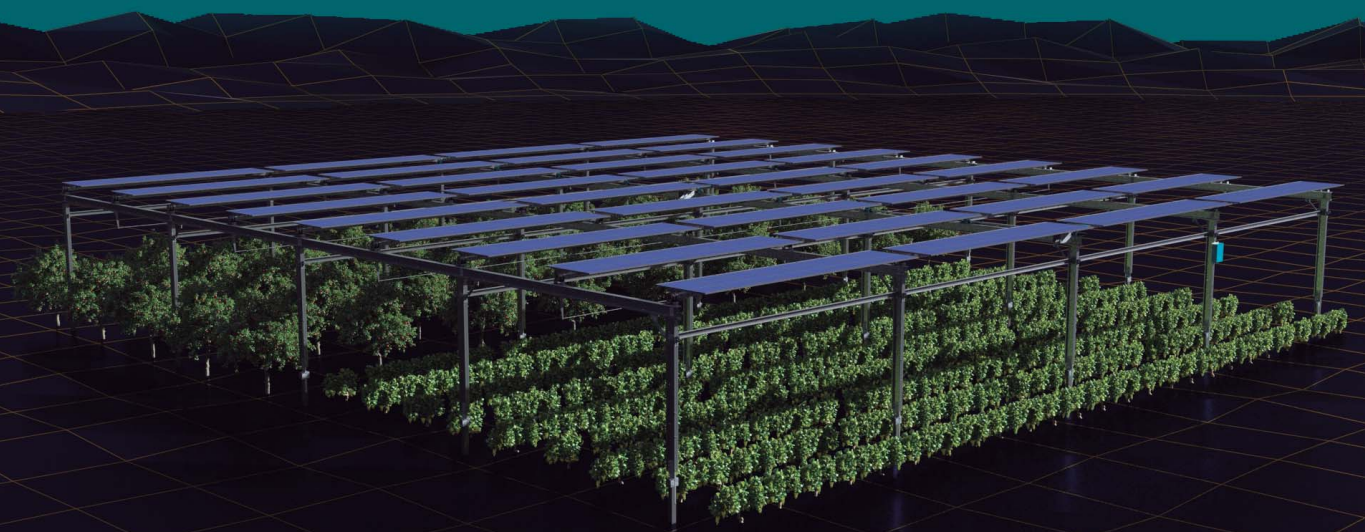


AXIAL

agri+tracker

TECHNICAL DATASHEET

INTEGRATED **GREEN** TECHNOLOGY



www.axialstructural.com

BASIC SPECS

TRACKING SYSTEM: HORIZONTAL AXIS E-W

COMMUNICATION: ZIGBEE / RS485

TRACKING RANGE: $\pm 85^\circ$

DRIVE SYSTEM: ENCLOSED SLEWING DRIVE DC MOTOR, 24 (24VDC) + TRANSMISSION SYSTEM

OWER SULPLY: STRING-POWERED (W/BATT) / GRID POWERED

MULTIROW SYSTEM: SHARED MOTORIZATION BETWEEN MULTIPLE ROWS

SOLAR ALGORITHM: NREL SPA

CALCULATION CRITERIA

BEAM CLEARANCE: UP TO 5.5 m.

N-S PILE DISTANCE: UP TO 10 m.

E-W PILE DISTANCE: FROM 6 m TO 12 m.

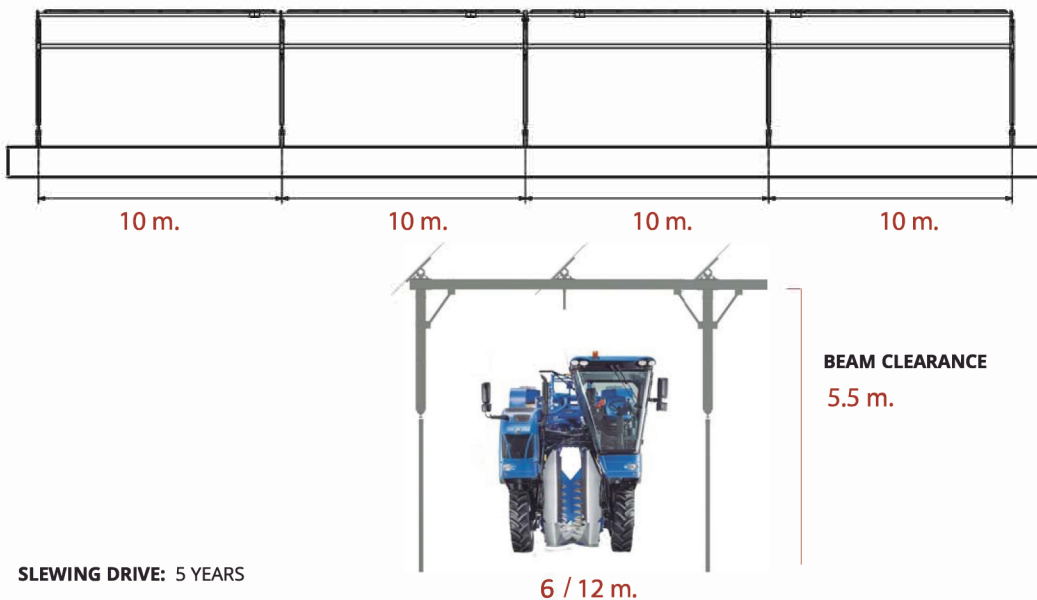
WIND RESISTANCE: 50KM/h (FROM $\pm 55^\circ$ TO $\pm 85^\circ$) & 70KM/h ($\pm 55^\circ$) / ACCORDING TO LOCAL REGULATIONS FOR STOW POSITION

MAXIMUM ADMISSIBLE SLOPE: 5% STANDARD

TEMPERATURE RANGE: 0° +55° STRING-POWERED / -40° +50° GRID POWERED

FOUNDATION SYSTEMS: RAMMING AS STANDARD

DIMENSIONS



WARRANTY

SLEWING DRIVE: 5 YEARS

ENGINE: 5 YEARS

ELECTRONICS: 10 YEARS

BATTERY: UP TO 10 YEARS

STRUCTURAL WARRANTY: UP TO 25 YEARS

CORROSION WARRANTY: UP TO 25 YEARS

WIND DYNAMICS STUDIES
Tested in Wind Tunnel
CFD Studies

TECHNICAL OFFICE
info@axialstructural.com
+34 901 233 814

Contents subject to change without prior notice © Axial Structural Solutions